

# Field Supply Kit for Non-Regenerative MinPak Plus DC Drives

Model Number 14C228

Instruction Manual D2-3380



**ATTENTION:** Only qualified electrical personnel familiar with the construction and operation of this equipment and the hazards involved should install, adjust, operate, and/or service this equipment. Read and understand this manual and other applicable manuals in their entirety before proceeding. Failure to observe this precaution could result in severe bodily injury or loss of life.

## Product Description

The Field Supply kit provides field excitation for shunt-wound DC motors used with 1/4 to 1-1/2 HP non-regenerative MinPak<sup>TM</sup> Plus DC drives. The kit is an assembly consisting of a terminal block, a field power cube, two wiring harnesses, an Auxiliary Mounting Bracket (M/N 14C209), and mounting hardware.

The user must provide appropriate Field Supply wiring to the motor, based upon the motor's field rating.

The contents of the Field Supply kit are listed in table 1.

Table 1 – Contents of the Field Supply Kit

Description	Quantity	Part Number
Auxiliary Mounting Bracket	1	608886-23A
Field Supply Power Cube	1	701819-12AD
Terminal Block 3TB	1	49455-03A
Wire Harness 51/52	1	608813-77R
Wire Harness F1/F2	1	608813-73R
Mounting Screws, 8-32 X 3/8	2	601741-62C
Auxiliary Mounting Bracket Kit Instruction Manual	1	D2-3379
Field Supply Kit Instruction Manual	1	D2-3380

## Installing the Field Supply



**ATTENTION:** Do not install modification kits with power applied to the drive. Disconnect, lock out, and tag all sources of incoming AC power to the drive before attempting such installation. Verify that no voltage is present at the drive's AC input terminals, L1/181 and L2/182. Failure to observe this precaution could result in severe bodily injury or loss of life.

**ATTENTION:** The user is responsible for conforming with all applicable local, national, and international codes. Failure to observe this precaution could result in damage to, or destruction of, the equipment.

**ATTENTION:** This kit contains ESD (Electrostatic Discharge) sensitive parts and assemblies. Static control precautions are required when installing, testing, servicing, or repairing this assembly. Failure to observe these precautions could result in damage to, or destruction of, the equipment.

Refer to your MinPak Plus DC drive instruction manual to locate and identify drive components. To install the Field Supply kit in your non-regenerative MinPak Plus DC drive:

- Step 1. Disconnect, lock out, and tag input power to the drive.
- Step 2. Remove the drive cover and verify that no voltage is present at the drive's AC input terminals, L1/181 and L2/182.
- Step 3. Mount the Field Supply's auxiliary mounting bracket as described in instruction manual D2-3379.
- Step 4. Connect wire harness 51/52 from the Field Supply power cube to terminal block 2TB, located at the upper left corner of the drive. Verify that wires F1 and F2 are connected from the Field Supply to terminal block 3TB on the Field Supply mounting bracket.
- Step 5. Route the user-supplied motor field wires (F1, F2) into the drive chassis using the same conduit as the armature and motor thermostat conductors. Refer to the section on DC wiring in your MinPak Plus DC drive instruction manual.
- Step 6. **For a full-wave supply**, connect the motor field wires to terminals F1 and F2 on Field Supply terminal block 3TB. See figure 1.  
**For a half wave supply**, connect motor lead F1 to terminal 5\* on 2TB and motor lead F2 to terminal F2 on 3TB. See figure 2.  
Refer to the motor's nameplate label and the technical specifications at the end of this instruction manual to determine the appropriate field type required.

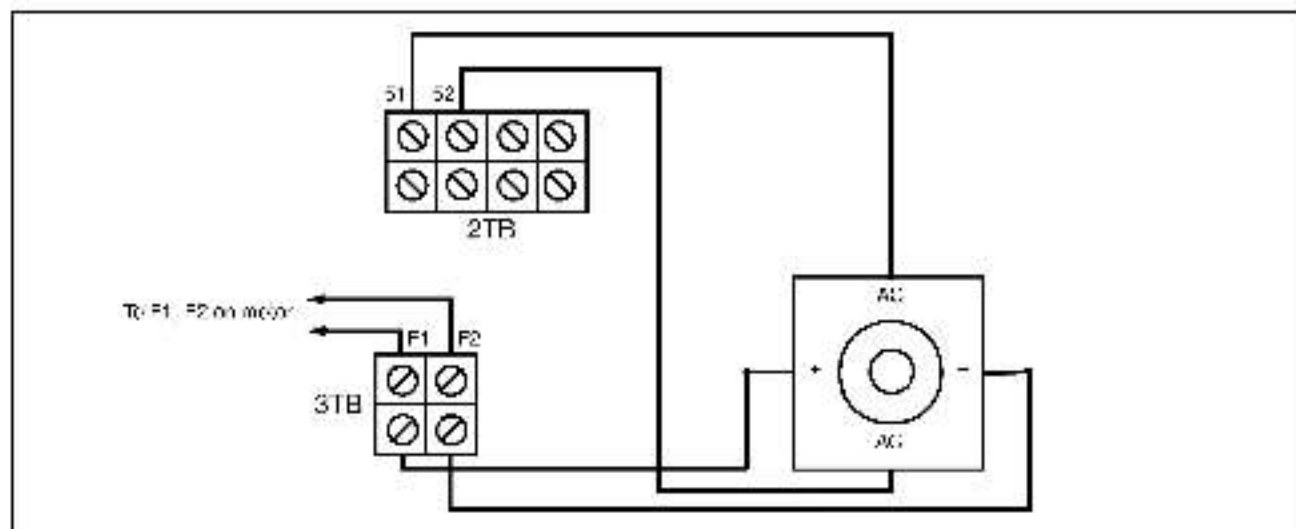


Figure 1 Connecting the Field Supply (Full wave)

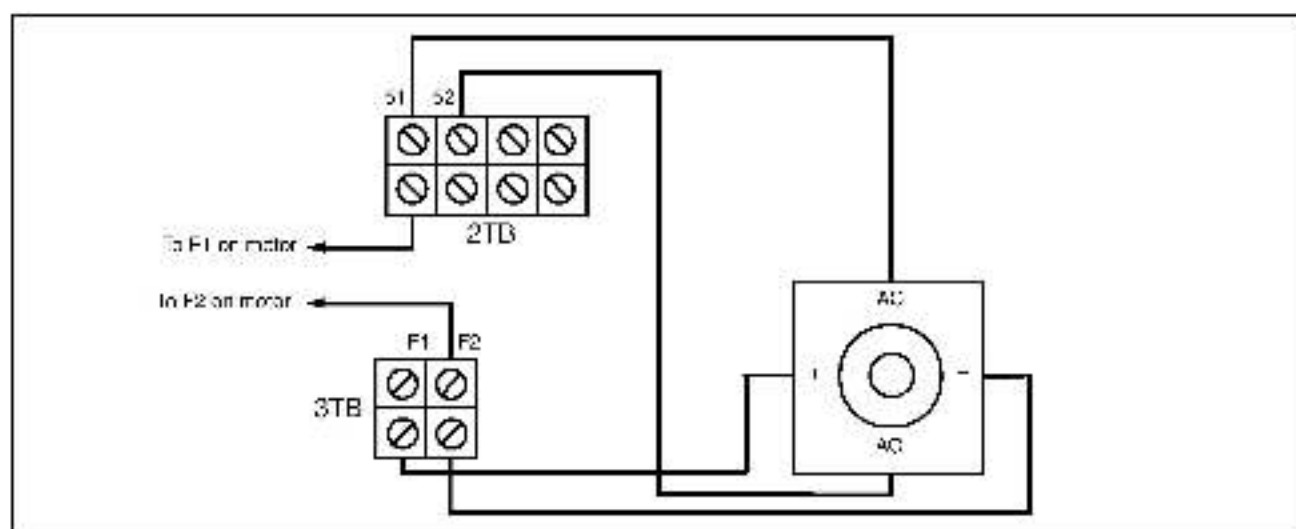


Figure 2 Connecting the Field Supply (Half Wave)

Step 7. Verify that the wiring of the Field Supply kit is correct and all connectors are securely fastened.

Step 8. Reattach the cover to the drive.

Step 9. Apply power and test the operation of the drive.

This completes the installation of the Field Supply kit.

Technical Specifications

AC Line Voltage (VAC)	Field Supply Voltage Output (VDC)		Field Supply Current Output (Amps)
	Full-wave	Half Wave	
115	100	50	3.0
230	200	100	3.0



#### **U.S. Drives Technical Support**

Tel: (1) 262-512-8176, Fax: (1) 262-512-2222, Email: [support@drives.rockwell.com](mailto:support@drives.rockwell.com), Online: [www.rockwell.com/support/drives](http://www.rockwell.com/support/drives)

Trademarks not belonging to Rockwell Automation are property of their respective companies.

**[www.rockwellautomation.com](http://www.rockwellautomation.com)**

---

#### **Power, Control and Information Solutions Headquarters**

Americas: Rockwell Automation, 1201 South Second Street, Milwaukee, WI 53204-2498 USA, Tel: (1) 414-382-2000, Fax: (1) 414-382-4444

Europe/Middle East/Africa: Rockwell Automation, Viebahn/Rockwood du Survaux 35, 1170 Brussels, Belgium, Tel: (32) 2-653-0800, Fax: (32) 2-653-0640

Asia Pacific: Rockwell Automation, Level 14, One R, Cyberport 3, 10 Cyberport Road, Hong Kong, Tel: (852) 2852-4088, Fax: (852) 2900-1846