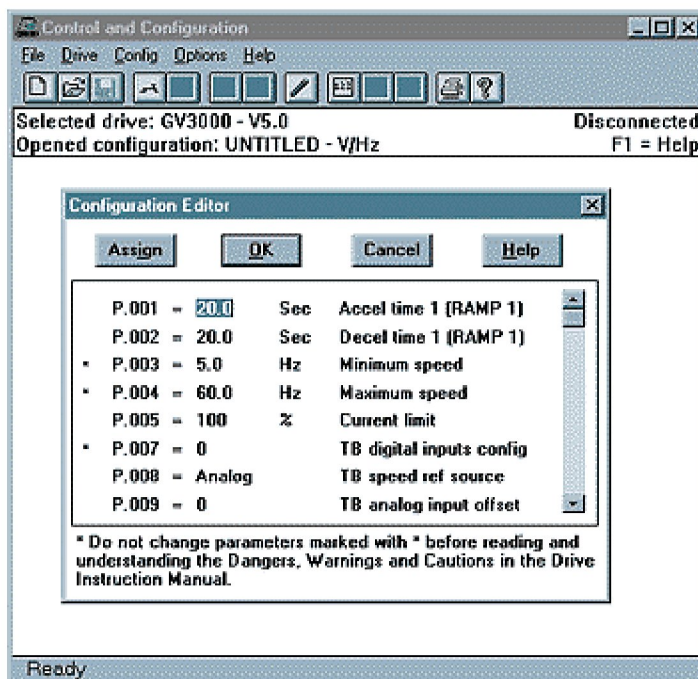


Control and configure GV3000/FlexPak 3000 drives with a personal computer

The CS3000 is a Windows[®] based software program which can be used to configure and operate GV3000/FlexPak 3000 drives from a personal computer (PC). This software provides many capabilities including the ability to:

- Create, store, upload, download, and print drive configurations
 - Drive control (start, stop, forward, reverse, etc.)
 - Monitor drive status (faults, alarms, ready, etc.)
 - Drive metering (Output speed, output current, etc.)
 - Monitor and change drive parameters in English instead of codes
 - Compare drive and PC configurations
 - Read and reset the drive fault/alarm log
-

File Management



From the "File Menu", drive configurations can be created, opened, saved, and printed. Once a file has been opened it can be downloaded to the drive. Configurations can be saved as files for future use or as a permanent record. This makes it simple to duplicate configurations for drives on repeat applications.

From the "Configuration Menu", configuration files can be edited, uploaded from a drive, downloaded to a drive, and compared. This means that drive configurations can be developed in the convenience of an office setting using a PC, and later downloaded to the drive which may be located on the factory floor.

Drive Control

Drive control from a PC speeds start-ups, minimizes time spent in troubleshooting, and provides a convenient method of monitoring drive status. Drive controls from the CS3000 include:

- Control Source Select
- Forward/Reverse
- Auto/Manual
- Start
- Stop/Reset
- Jog
- Set Speed Reference

There is a Drive Control Panel which displays drive output conditions such as:

- FlexPak 3000
- Selected Reference
- Motor Speed
- Armature Volts
- Motor Current
- Percent Load

GV3000 set for V/Hz

Selected Reference

Output Speed

Output Frequency

Output Amps

Output Volts

Output kW

GV3000 set for Vector

Selected Reference

Motor Speed

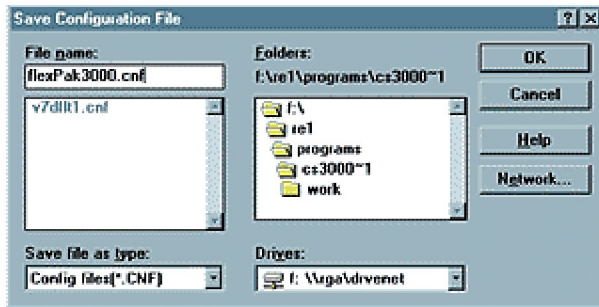
Motor Current

Motor Voltage

Motor Torque

Output kW

Configuration



A "Drive Status" pop-up window can also be viewed anytime a drive connect is performed. This window can be moved, closed or left where it is displayed. The information provided by this status window is useful for checking the overall condition of the drive, the connection, and fault/alarm status.

A "Fault/Alarm Log" window is automatically displayed if drive is connected to a PC and the CS3000 software is running. The fault or alarm number, description, and time stamp are displayed in the fault/alarm log.

Hardware Requirements

- IBM 286/386/486/Pentium or IBM-compatible PC
- Windows 3.1 or higher
- Hard drive with at least 8 Mbytes free space available
- 640 Kbytes of conventional RAM plus 256 Kbytes of extended RAM (minimum)
- A 3.5" floppy disk drive
- Monochrome or color monitor: EGA, CGA, or VGA
- RS-232 serial COM port for communicating to the drive

Related Cables

- Model number 2CA3000 interface cable (9-pin to 9-pin). This 120" long cable is used to connect a PC to the GV3000.
- Model number 2CA3001 interface cable (25-pin to 9-pin) adapter cable. This cable is used if the PC has a 25-pin COM port and you are using the 2CA3000 interface cable.
- Model number 61C127 interface cable (25-pin to 9-pin). This 120" long cable is used to connect a PC to the FlexPak 3000.