

FLEXPak^{PLUS} / MinPak^{PLUS} ACCESSORY

INSTRUCTION MANUAL D-3960

CONTACTOR AUXILIARY CONTACT KITS MODEL NUMBERS 14C480-14C484 ASSEMBLY DRAWINGS 705388-3

The equipment described below should be installed only by qualified electrical maintenance personnel familiar with the construction and operation of the equipment and the hazards involved.

DESCRIPTION

With the optional auxiliary M Contactor Kit, the run status of the three phase MinPak Plus and FlexPak Plus can be interlocked with user supplied devices. Typical applications include pilot/indicator lights, alarms, and interlocking with other control circuits dependent on the drive system. (Figure 1).

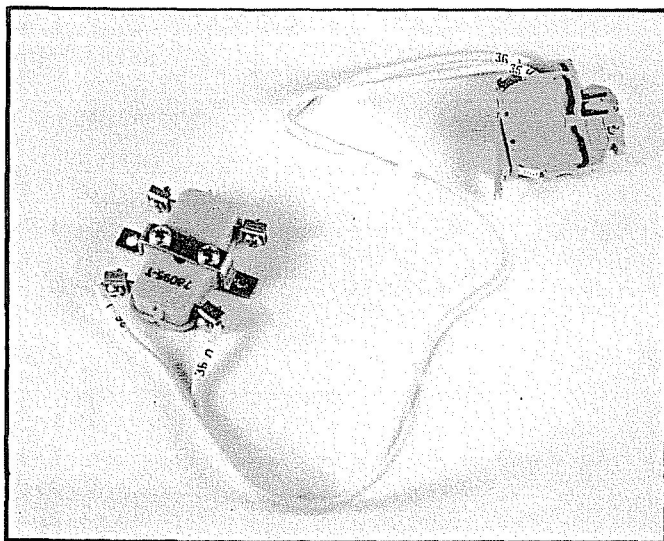


Figure 1 — Contactor Auxiliary Contact Kit

The Kit provides a single pair of Form C Contacts, one normally open (NO) and one normally closed (NC). These contacts function whether the controller is unidirectional (forward only) or bidirectional (forward/reverse). Users supply the wiring to external devices and should meet

appropriate local codes. Under no circumstances should these contacts be used to control brakes or power loads. Recommended wire size is AWG No. 14 max.

SPECIFICATIONS:

Model Number	Voltage	Current Rating	Load
14C480 & 14C481	115 VAC	3 Amps	Inductive
14C482	115 VAC & 28 VDC	10 Amps	Resistive
		1 Amp	Inductive

Controller Rating

Kit Model Number

3-10 hp @ 230VAC

14C482 ②

15-20 hp @ 230VAC/
3-40 hp @ 460VAC

14C480

15-20 hp @ 230VAC
3-40 hp @ 460VAC

14C481 ①

① For use with Bidirectional Applications.

② For use with Unidirectional & Bidirectional Applications.

INSTALLATION:

WARNING

BEFORE ATTEMPTING TO INSTALL THIS MIN-PAK PLUS/FLEXPak PLUS MODIFICATION KIT, DISCONNECT AND LOCK OUT ALL SOURCES OF INCOMING POWER TO THE CONTROLLER CABINET.

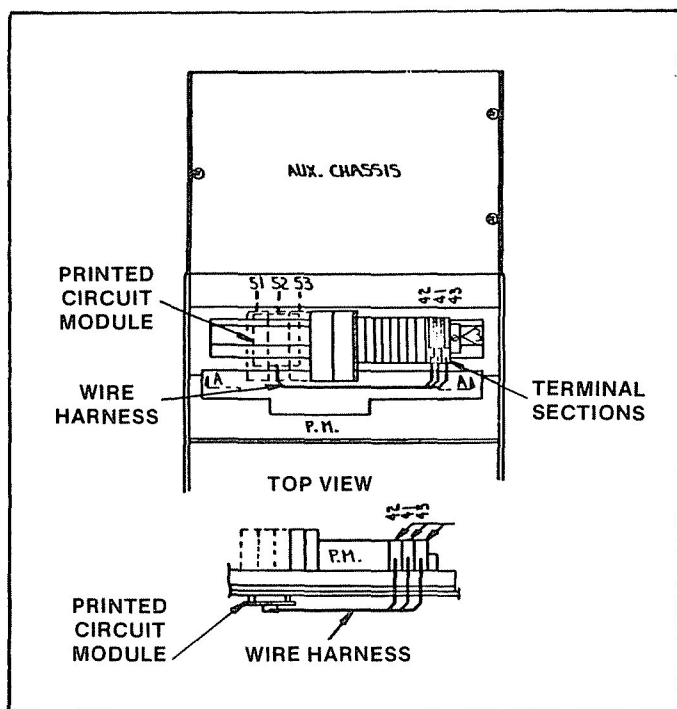


Figure 2 — Mounting Location of Auxiliary Contact Kit 3-10 hp @ 230VAC

1. Open face plate and let hand down.
2. Remove fuse/circuit breaker mounting plate from auxiliary chassis by removing three screws.

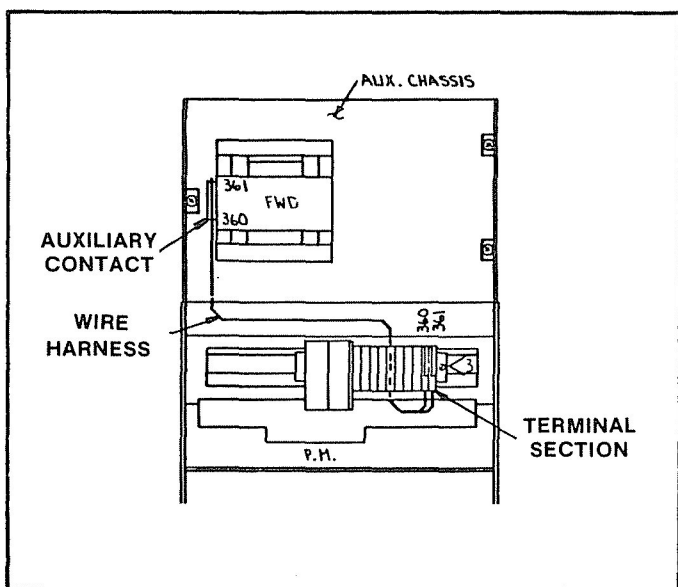


Figure 3 — 3-40 hp @ 460VAC, 15-20 hp @ 230VAC Unidirectional Auxiliary Contact Kit Installation

3. **3-10 hp @ 230VAC - ONLY** — Mount PC board to terminal mounting bracket by pressing stand offs into holes on mounting bracket.

(NOTE: Terminal Board on PC to face into power module). (Refer to Figures 2, 5 & 6) skip to step 5.

4. Mount auxiliary contacts to contact or contactors as shown in Figure 3 & 4 with hardware supplied.
5. Mount terminal sections to right end of terminal board. (Refer to Figures 2, 3, 4 & 6).
6. Route wire harness('s) under terminal board mounting bracket and connect to terminal sections. On 3-10 hp 230VAC kit route 139 orange harness to regulator PC module #139 pins on top of card.
7. Remount fuse/circuit breaker mounting plate to auxiliary chassis using existing screws.

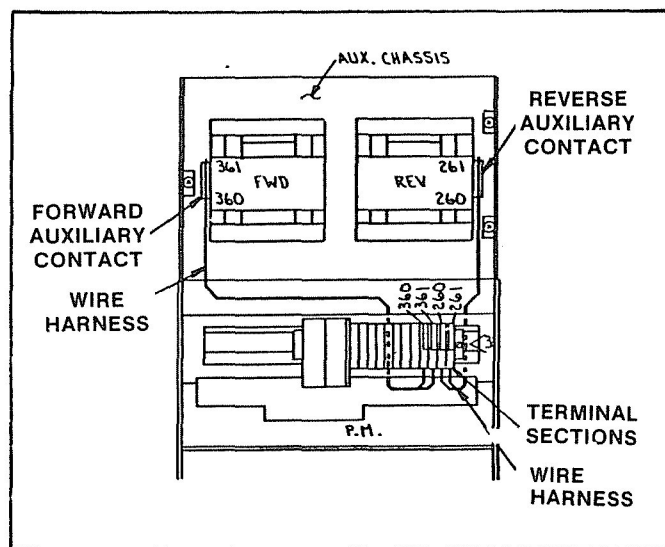


Figure 4 — 3-40 hp @ 460VAC, 15-20 hp @ 230VAC Bidirectional Auxiliary Contact Kit Installation

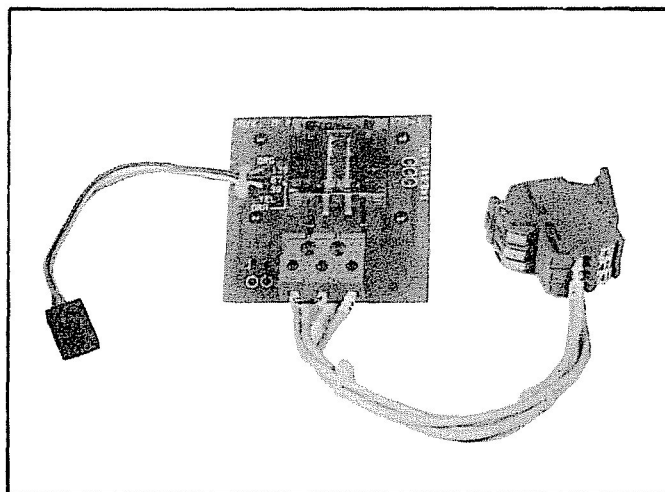


Figure 5 — 3-10 hp @ 230VAC Auxiliary Contact Kit

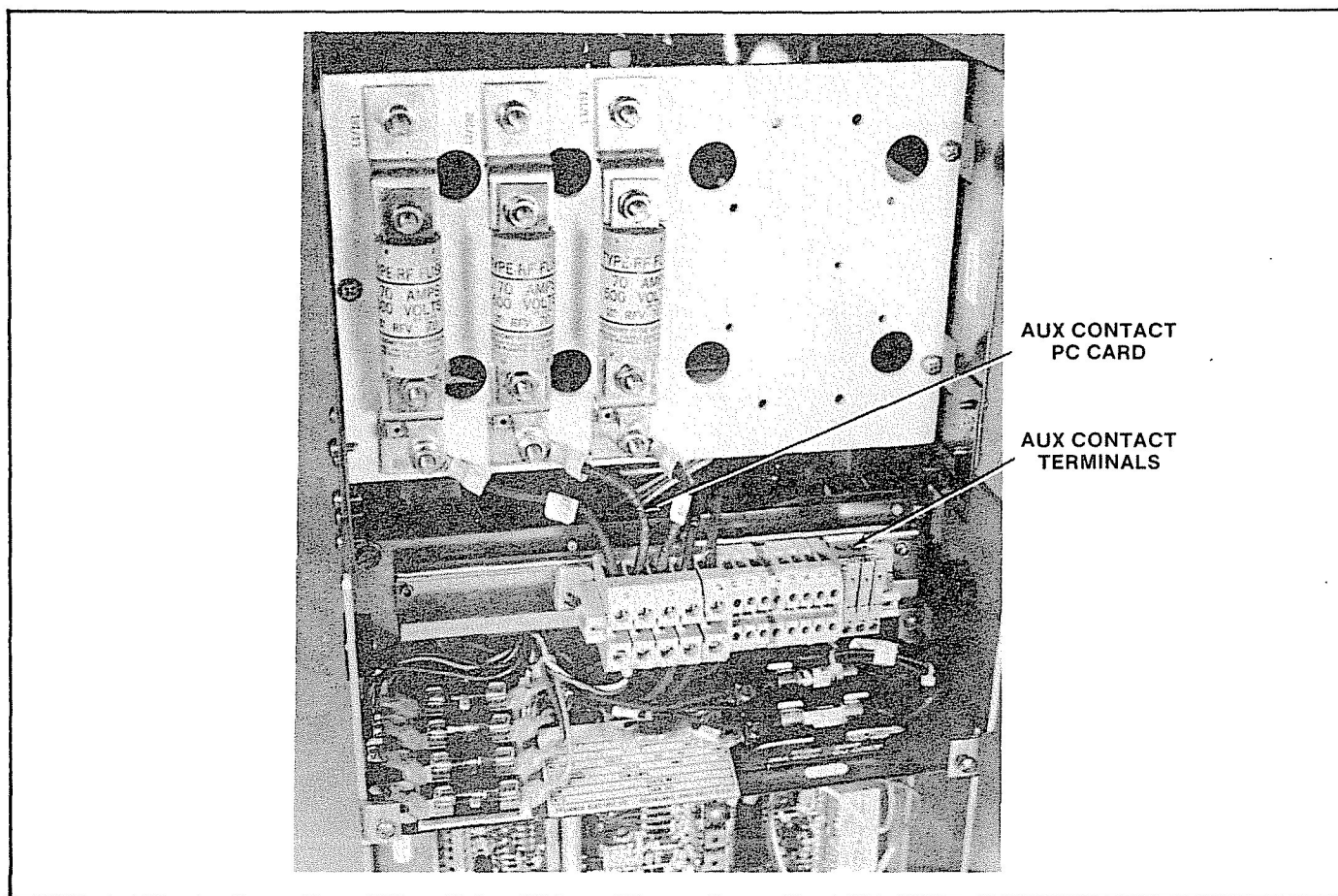


Figure 6 — 3-10 hp @ 230VAC Auxiliary Contact Kit Installed

8. Tighten all connectors that may have been loosened during kit installation.
9. Close face plate and tighten screws.
10. Mount warning name plate to power module face plate per Figure 7.

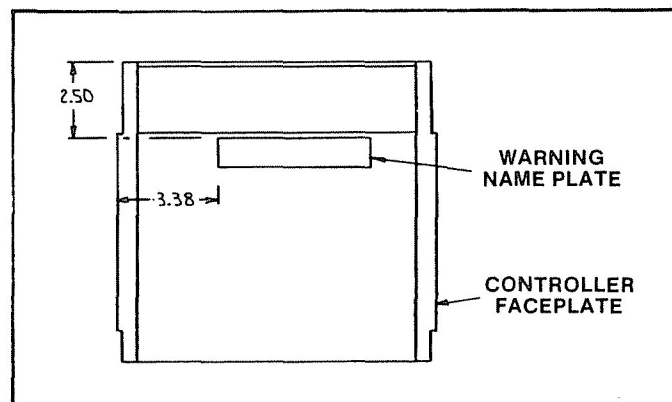


Figure 7 — Auxiliary Kit Warning Plate Location

Reliance Electric Company / 24703 Euclid Avenue / Cleveland, Ohio 44117

RELIANCE ELECTRIC 